



GAT MONTHLY MEMBERSHIP PROGRESS REPORT

Results as of: 12/31/2021

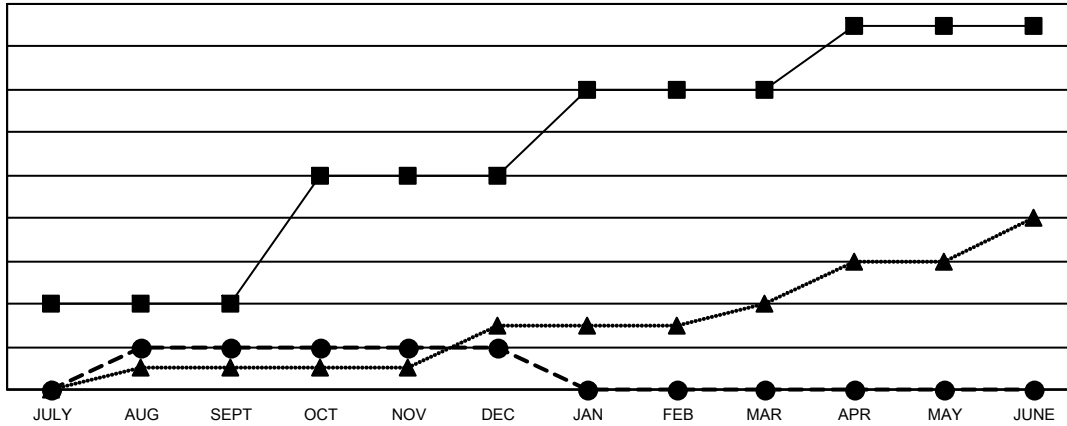
Multiple District 35

LOCATION: FLORIDA

Clubs			
RESULTS FOR 2021-2022			
QUARTER	NEW CLUB GOAL	NEW CLUBS	DROPPED CLUBS
JULY/AUG/SEPT	4	2	3
OCT/NOV/DEC	6	0	8
JAN/FEB/MAR	4	0	0
APR/MAY/JUNE	3	0	0

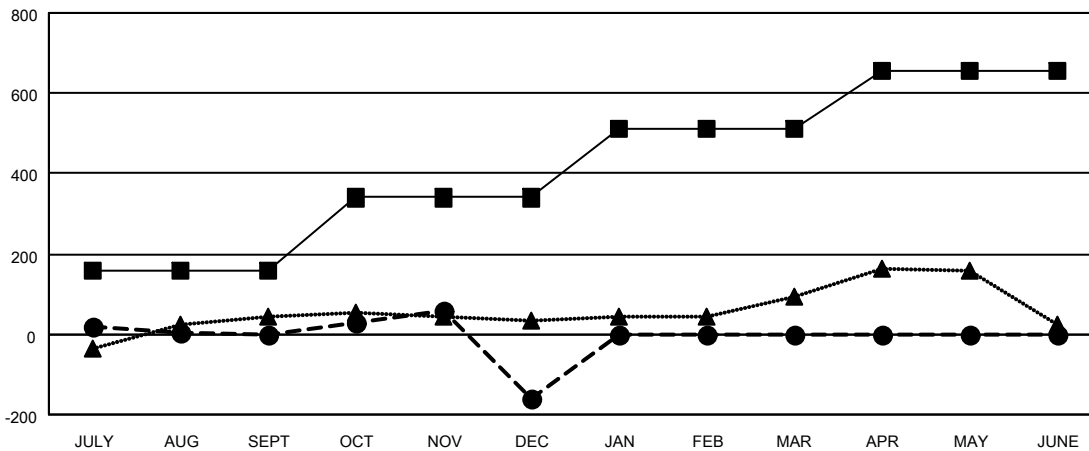
Members			
RESULTS FOR 2021-2022			
QUARTER	MEMBER GROWTH NET GOAL	MEMBER GROWTH ACTUAL	DROPPED MEMBERS ACTUAL (including transfers)
JULY/AUG/SEPT	160	272	229
OCT/NOV/DEC	180	248	376
JAN/FEB/MAR	170	0	0
APR/MAY/JUNE	145	0	0

GOALS AND ACTUAL NEW CLUBS CUMULATIVE



- - CURRENT YEAR GOALS FOR NEW CLUBS
- - CURRENT YEAR ACTUAL NEW CLUBS
- ▲ - LAST YEAR ACTUAL NEW CLUBS

GOALS AND ACTUAL MEMBERS CUMULATIVE



- - MEMBER GROWTH NET GOAL
- - MEMBER GROWTH ACTUAL
- ▲ - LAST YEAR MEMBERSHIP ACTUAL

DROPPED CLUBS: 11	107 CLUBS OF 219 ADDED 1 OR MORE NEW MEMBERS	GENDER DISTRIBUTION
DROPPED MEMBERS	CLICK HERE FOR CUMULATIVE MEMBERSHIP DATA	MALE 2,582 (53.65%)
DECEASED 42		FEMALE 2,231 (46.35%)
CLUB CANCELLED 127		NON BINARY 0 (0.00%)
OTHER 443		PREFER NOT TO ANSWER 0 (0.00%)
TOTAL 612		TOTAL FAMILY UNIT MEMBERS 1,140
		FAMILY MEMBERS PAYING HALF DUES 586